

# DATA SHEET

## **NE57606**

2 to 4 cell redundant Lithium-ion  
overcharge monitor

Product data  
Supersedes data of 2002 Oct 10

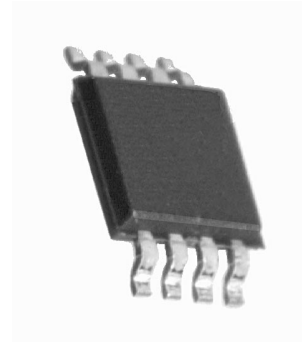
2003 Oct 29

## 2 to 4 cell redundant Lithium-ion overcharge monitor

# NE57606

### GENERAL DESCRIPTION

The NE57606 is a redundant overcharge detection IC for use within 2-4 cell Li-ion battery packs. It detects the voltage of each Li-ion cell and issues an overcharge signal which then can be used to alert the portable host or be used to turn-off a series charge MOSFET within the battery pack. Its purpose is to act as a back-up protection circuit to a primary Li-ion protection circuits such as the NE57605 and NE57607. The overcharge signal is an open collector output which can be wire-ORed with other safety functions.



### FEATURES

- Consumption current ( $V_{CEL} = 3.8\text{ V}$ )  $3.0\ \mu\text{A}$  typical
- Consumption current ( $V_{CEL} = 2.3\text{ V}$ )  $0.3\ \mu\text{A}$  typical
- Input current between cell pins ( $V_{CEL} = 3.8\text{ V}$ )  $\pm 0.3\ \mu\text{A}$  max
- Overcharge detection voltage = threshold voltage  $\pm 50\text{ mV}$
- Overcharge detection delay time ( $C_T = 0.22\ \mu\text{F}$ )  $1.5\text{ s}$  typical
- Four voltage ranges available

### APPLICATIONS

- Li-ion Battery pack protection

### SIMPLIFIED DEVICE DIAGRAM

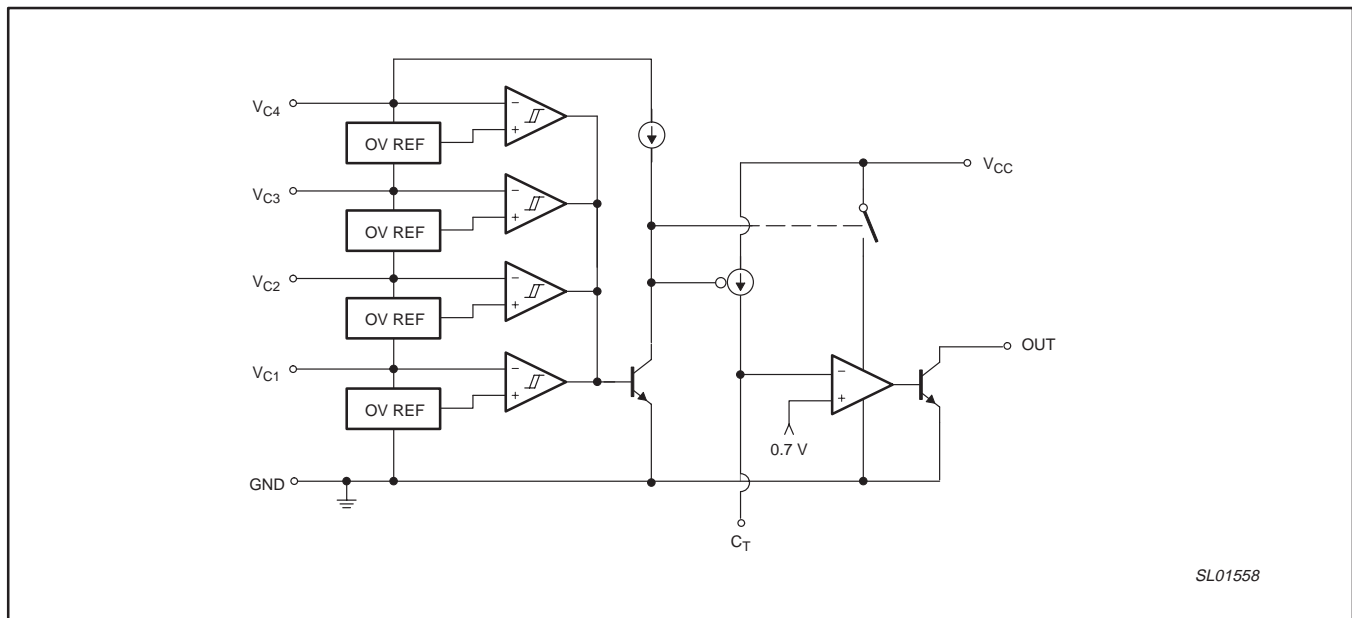


Figure 1. Simplified device diagram.

## 2 to 4 cell redundant Lithium-ion overcharge monitor

NE57606

## ORDERING INFORMATION

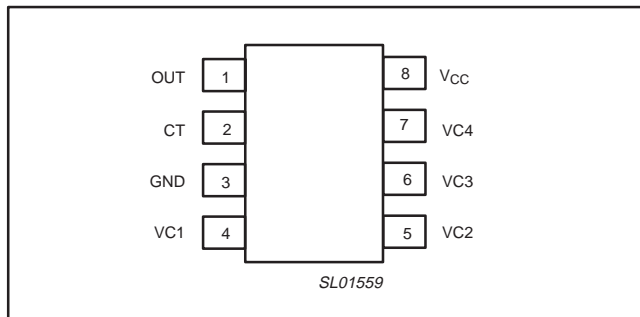
TYPE NUMBER	PACKAGE			TEMPERATURE RANGE
	NAME	DESCRIPTION	VERSION	
NE57606YD	SO8	Small outline plastic, surface mount 8-pin	SOP005	-20 to +80 °C
NE57606CD	SO8	Small outline plastic, surface mount 8-pin	SOP005	-20 to +80 °C
NE57606DD	SO8	Small outline plastic, surface mount 8-pin	SOP005	-20 to +80 °C
NE57606ED	SO8	Small outline plastic, surface mount 8-pin	SOP005	-20 to +80 °C

## Voltage options

The device has 4 voltage options.

Part Number	Detection voltage	Hysteresis
NE57606Y	4.350 V	250 mV
NE57606C	4.225 V	None
NE57606D	4.130 V	None
NE57606E	4.450 V	100 mV

## PIN CONFIGURATION



## PIN DESCRIPTION

Pin	Symbol	Description
1	OUT	Reset output pin
2	C <sub>T</sub>	Delay capacitance pin
3	GND	Ground pin
4	VC1	Cell 1 power supply
5	VC2	Cell 2 power supply
6	VC3	Cell 3 power supply
7	VC4	Cell 4 power supply
8	V <sub>CC</sub>	Voltage supply to IC

## MAXIMUM RATINGS

Symbol	Parameter	Min	Max	Unit
V <sub>CC</sub>	V <sub>CC</sub> input voltage	-0.3	+24	V
VC2	V4 input voltage (Note1)	-0.3	+24	V
VC3	V3 input voltage (Note1)	-0.3	+24	V
VC4	V2 input voltage (Note1)	-0.3	+24	V
VC1	V1 input voltage (Note1)	-0.3	+24	V
V <sub>CT</sub>	C <sub>T</sub> pin voltage	-0.3	+24	V
V <sub>OUT</sub>	V <sub>OUT</sub> pin voltage	-0.3	+24	V
T <sub>stg</sub>	Storage Temperature	-40	+125	°C
T <sub>amb</sub>	Operating temperature	-20	+80	°C
P <sub>D</sub>	Power dissipation	-	300	mW

## NOTES:

- V<sub>CC</sub> = >V4 = >V3 = >V2 = >V1 = >-0.3 V.
- A current no greater than 100 μA should be passed through pin C<sub>T</sub>.

## 2 to 4 cell redundant Lithium-ion overcharge monitor

NE57606

**ELECTRICAL CHARACTERISTICS** $T_{amb} = 25^{\circ}\text{C}$ ,  $V_{CEL} = V4 - V3 = V3 - V2 = V2 - V1 = V1 - \text{GND}$ ;  $V_{CC} = 4V_{CEL}$ , except where noted otherwise

Symbol	Parameter	Conditions	Min	Typ	Max	Units	
I1	Consumption current 1	$V_{CEL} = 3.8\text{ V}$	–	3.0	6.0	$\mu\text{A}$	
I2	Consumption current 2	$V_{CEL} = 2.3\text{ V}$	–	0.3	0.5	$\mu\text{A}$	
I3	Pin I/O current between cells	$V_{CEL} = 3.8\text{ V}$ (V4, V3, V2, V1 side)	–	$\pm 0.0$	$\pm 0.3$	$\mu\text{A}$	
V <sub>S</sub>	Overcharge detection voltage	$V_{CEL} = \text{L} \rightarrow \text{H}$ , $T_{amb} = -20\text{ to }+70\text{ }^{\circ}\text{C}$	NE57606Y	4.30	4.350	4.40	V
			NE57606C	4.175	4.225	4.174	V
			NE57606D	4.080	4.130	4.180	V
			NE57606E	4.400	4.450	4.500	V
HSY	Hysteresis voltage	$V_{CEL} = \text{L} \rightarrow \text{H} \rightarrow \text{L}$	0.20	0.25	0.30	V	
t <sub>PLH</sub>	Overcharge detection delay time	$C_T = 0.22\ \mu\text{F}$	1.0	1.5	2.0	S	
V <sub>OL</sub>	Output voltage L	$I_L = 100\ \mu\text{A}$	–	–	0.4	V	
I <sub>LEAK</sub>	Output leakage current	$V_{CEL} = 3.8\text{ V}$ , $V_{OUT} = 24\text{ V}$	–	–	0.1	$\mu\text{A}$	

## 2 to 4 cell redundant Lithium-ion overcharge monitor

NE57606

### TECHNICAL DISCUSSION

The NE57606 is typically used in conjunction with a Li-ion protection IC as redundant protection for a 2, 3, or 4-cell lithium-ion battery pack. Lithium-ion cells can present a safety hazard if they become overcharged, therefore careful monitoring of each cell's operating point is necessary. For very safety-sensitive applications, a back-up protection circuit using a device such as the NE57606 is advisable.

The NE57606 monitors each cell within a 2-4 Li-ion cell battery pack. If any cell within the battery pack exceeds the full-charge threshold voltage, the overvoltage fault status output assumes a low state. This output signal should be used to alert other parts of the system that an overcharged state has been reached. This output could also be used to open a MOSFET placed in series with the positive battery terminal to interrupt the charging current from the battery charger.

### Redundant protection of a Lithium-ion battery pack

Within a typical Li-ion battery system, there are two or three major circuits responsible for the monitoring and maintenance of the Li-ion cells: the Li-ion battery charger, the Li-ion protection circuit, and sometimes the redundant Li-ion overcharge detector. This type of system is called a triple-redundant protected system. If any one of the protection circuits fail, then there will be two other independent systems to assume the protection function. If the product is designed properly, that is, component de-rating, non-cascading failure modes, ESD, packaging, etc., having two or more simultaneous failures within the protection system is virtually impossible.

During normal operation of the Li-ion system, the battery charger should be the circuit that terminates the charge. The Lithium-ion protection circuit should never be used for routine termination of the charging function. It should be viewed as a back-up protection system in the event of a charger failure. The redundant overcharge detection IC should disconnect the pack from the charger in the event that both other systems have failed.

Setting the trip-point voltages are key to the system's operation. First, the trip point tolerances should not overlap, or the systems will not become active in the proper order over large production. The trip points should be typically set in the following fashion:

1. The battery charger should be set to terminate its charge at a point just below the cell's full charge voltage ( $-1\%$ )
2. The Li-ion protection circuit is set to open the series charge MOSFET switch at the rated full charge voltage of any of the cell(s). ( $\pm 1\%$ )
3. The redundant overcharge detector is set to issue an alert and/or disconnect a series charge MOSFET switch when any cell voltage exceeds the rated full charge voltage ( $+1\%$ )

With trip-points set as described above, the charger will taper its charging current until the charging current falls below a certain current level, after which the charger turns off. Only if the charger does not or cannot terminate the charging, the protection IC will open a series MOSFET switch, thus cutting off any charge current. Lastly, if both the charger and the protection IC were to fail, the NE57606 will open another series MOSFET.

# 2 to 4 cell redundant Lithium-ion overcharge monitor

# NE57606

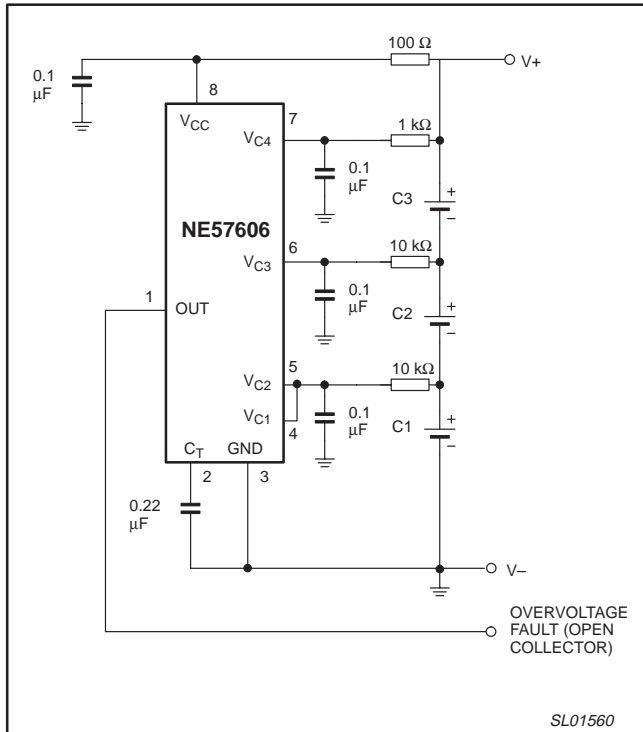
## APPLICATION INFORMATION

The NE57606 can be used within 2, 3, or 4-cell battery packs. This can be done by electrically creating a short-circuit across the pins that would have been connected to the ends of the cells. For a 3-cell pack pin VC1 should be connected to ground (pins 3 to 4). All of the combinations are shown in Table 1.

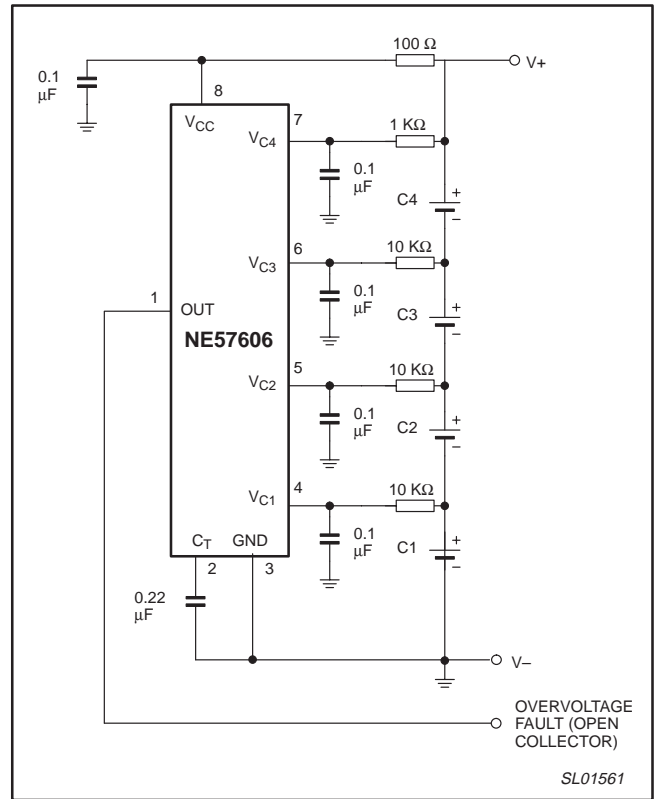
**Table 1.**

Cells	VC1	VC2	VC3	VC4
4-cell	VC1	VC2	VC3	VC4
3-cell	VC1	VC1	VC2	VC3
2-cell	VC1	VC1	VC1	VC2

The schematics for a 3-cell and a 4-cell monitoring circuit are shown in Figures 2 and 3 respectively.



**Figure 2. 3-cell monitoring circuit**



**Figure 3. 4-cell monitoring circuit**

# 2 to 4 cell redundant Lithium-ion overcharge monitor

# NE57606

## Using the NE57606 within a Li-ion battery system

A Li-ion and Li-polymer 4-cell battery system using the NE57605 and the NE57606 is shown in Figures 4 and 5.

The circuit in Figure 4 shares the charge MOSFET between the ICs. This is sometimes not acceptable since a failure of the charge MOSFET or its associated drive circuitry can disable protection provided by the second circuit.

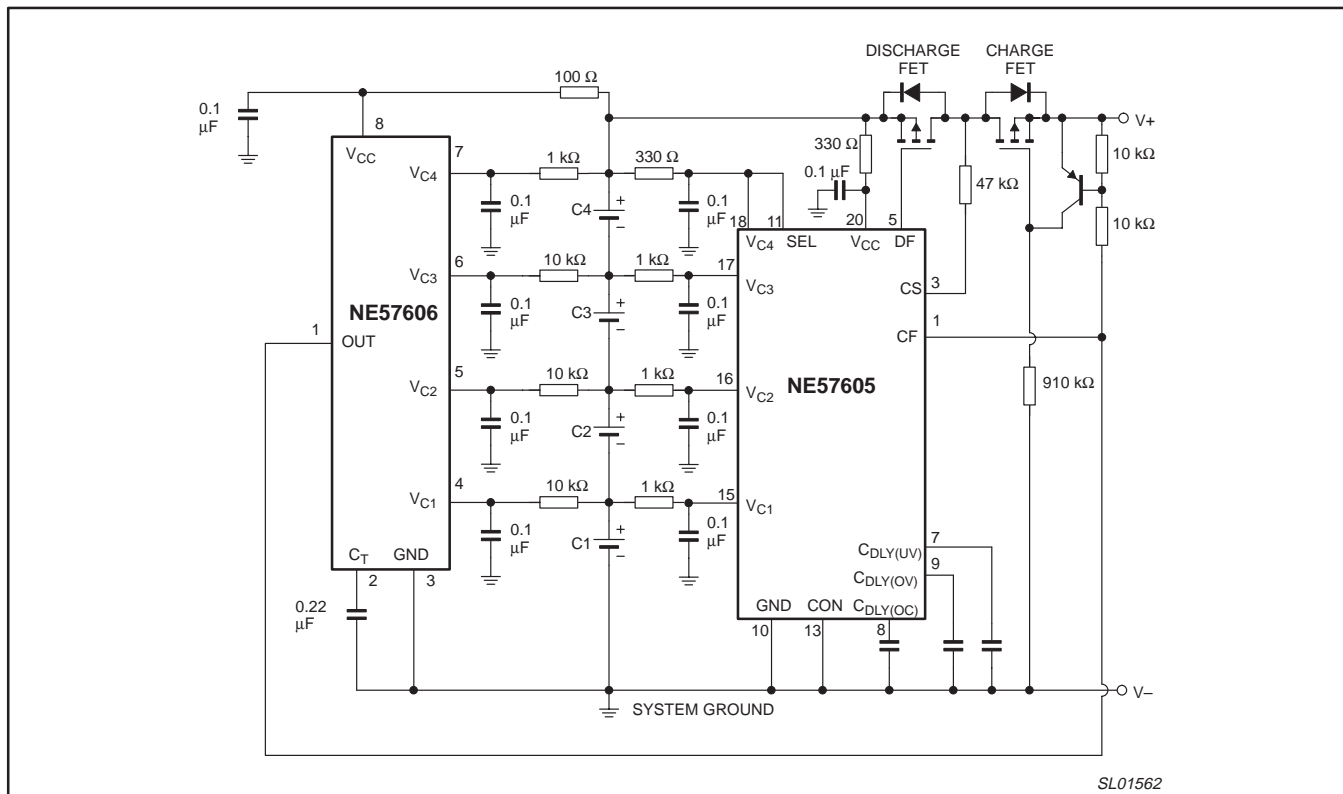
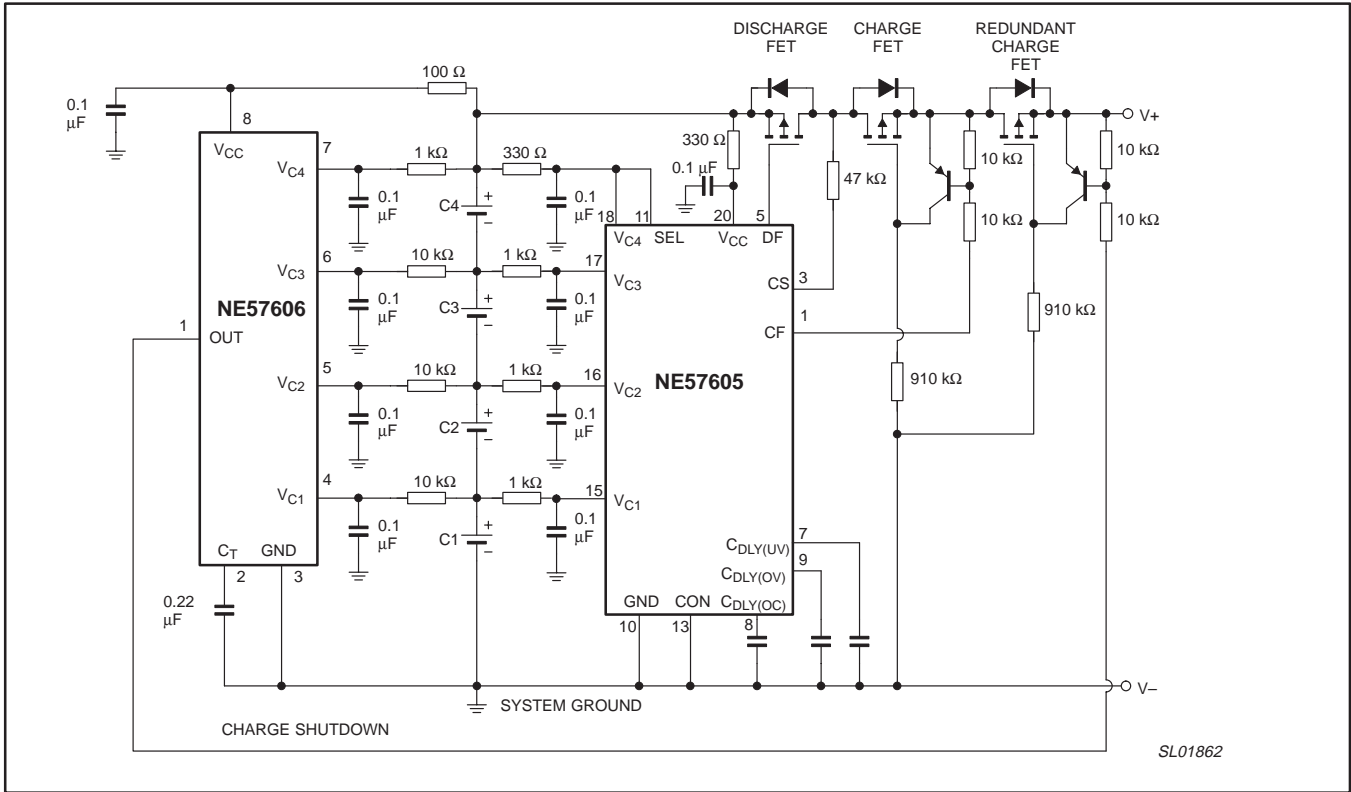


Figure 4. Shared charge MOSFET

# 2 to 4 cell redundant Lithium-ion overcharge monitor

# NE57606



**Figure 5. Double-redundantly protected 4-cell Li-ion battery pack (completely redundant system)**

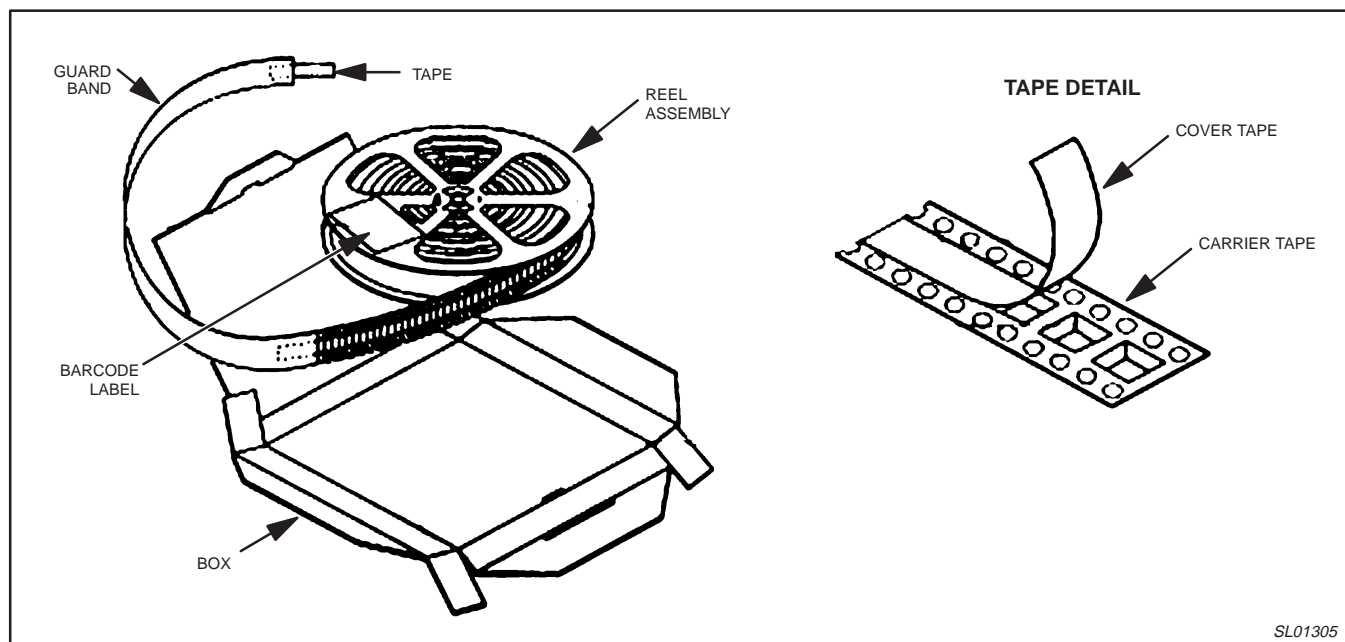
The circuit in Figure 5 shows how to implement a completely isolated design. None of the components are shared and a failure in any part of one circuit will not affect the operation of the other. By also not sharing input noise filter components, the failure of the IC due to an input failure or an open circuit will not affect the protection provided by the other circuit.



# 2 to 4 cell redundant Lithium-ion overcharge monitor

NE57606

## PACKING METHOD



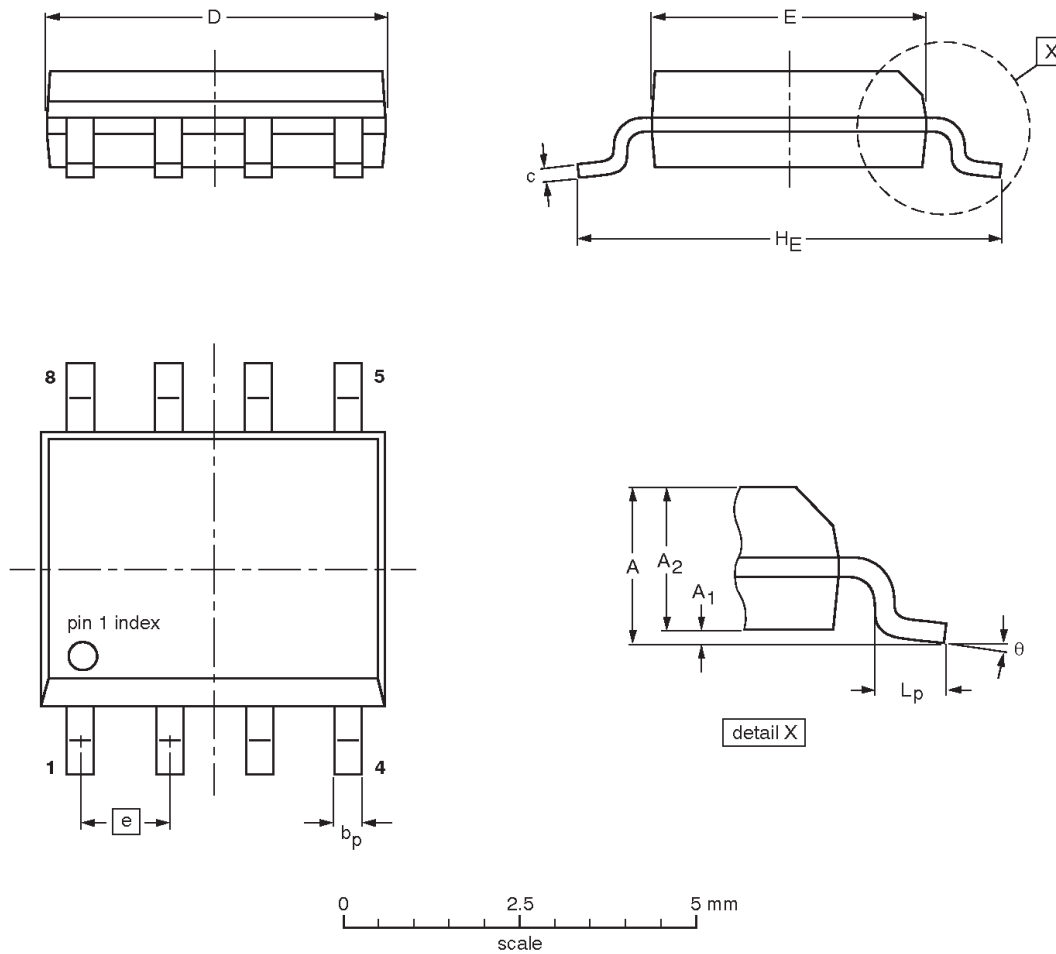
SL01305

2 to 4 cell redundant Lithium-ion overcharge monitor

NE57606

S08: plastic small outline package; 8 leads; body width 3.9 mm

SOP005



**DIMENSIONS (inch dimensions are derived from the original mm dimensions)**

UNIT	A max.	A <sub>1</sub>	A <sub>2</sub>	b <sub>p</sub>	c	D <sup>(1)</sup>	E <sup>(2)</sup>	e	H <sub>E</sub>	L <sub>p</sub>	$\theta$
mm	1.73	0.25 0.10	1.45 1.25	0.51 0.33	0.25 0.19	4.95 4.80	4.0 3.8	1.27	6.2 5.8	1.27 0.38	8° 0°
inches	0.068	0.010 0.004	0.057 0.049	0.013 0.020	0.0100 0.0075	0.20 0.19	0.16 0.15	0.050	0.244 0.228	0.050 0.015	

**Notes**

1. Plastic or metal protrusions of 0.15 mm maximum per side are not included.
2. Plastic or metal protrusions of 0.25 mm maximum per side are not included.

OUTLINE VERSION	REFERENCES				EUROPEAN PROJECTION	ISSUE DATE
	IEC	JEDEC	JEITA			
SOP005	076E03	MS-012				03-10-07

## 2 to 4 cell redundant Lithium-ion overcharge monitor

NE57606

## REVISION HISTORY

Rev	Date	Description
_2	20031029	<b>Product data (9397 750 12191). ECN 853-2296 30336 of 09 September 2003. Supersedes data of 2002 Oct 10 (9397 750 08992).</b> Modifications: <ul style="list-style-type: none"> <li>Change package outline version to SOP005 in Ordering information table and Package outline sections.</li> </ul>
_1	20021010	<b>Product data (9397 750 08992). ECN 853-2296 27198 of 10 October 2001.</b>

## Data sheet status

Level	Data sheet status <sup>[1]</sup>	Product status <sup>[2]</sup> <sup>[3]</sup>	Definitions
I	Objective data	Development	This data sheet contains data from the objective specification for product development. Philips Semiconductors reserves the right to change the specification in any manner without notice.
II	Preliminary data	Qualification	This data sheet contains data from the preliminary specification. Supplementary data will be published at a later date. Philips Semiconductors reserves the right to change the specification without notice, in order to improve the design and supply the best possible product.
III	Product data	Production	This data sheet contains data from the product specification. Philips Semiconductors reserves the right to make changes at any time in order to improve the design, manufacturing and supply. Relevant changes will be communicated via a Customer Product/Process Change Notification (CPCN).

[1] Please consult the most recently issued data sheet before initiating or completing a design.

[2] The product status of the device(s) described in this data sheet may have changed since this data sheet was published. The latest information is available on the Internet at URL <http://www.semiconductors.philips.com>.

[3] For data sheets describing multiple type numbers, the highest-level product status determines the data sheet status.

## Definitions

**Short-form specification** — The data in a short-form specification is extracted from a full data sheet with the same type number and title. For detailed information see the relevant data sheet or data handbook.

**Limiting values definition** — Limiting values given are in accordance with the Absolute Maximum Rating System (IEC 60134). Stress above one or more of the limiting values may cause permanent damage to the device. These are stress ratings only and operation of the device at these or at any other conditions above those given in the Characteristics sections of the specification is not implied. Exposure to limiting values for extended periods may affect device reliability.

**Application information** — Applications that are described herein for any of these products are for illustrative purposes only. Philips Semiconductors make no representation or warranty that such applications will be suitable for the specified use without further testing or modification.

## Disclaimers

**Life support** — These products are not designed for use in life support appliances, devices, or systems where malfunction of these products can reasonably be expected to result in personal injury. Philips Semiconductors customers using or selling these products for use in such applications do so at their own risk and agree to fully indemnify Philips Semiconductors for any damages resulting from such application.

**Right to make changes** — Philips Semiconductors reserves the right to make changes in the products—including circuits, standard cells, and/or software—described or contained herein in order to improve design and/or performance. When the product is in full production (status 'Production'), relevant changes will be communicated via a Customer Product/Process Change Notification (CPCN). Philips Semiconductors assumes no responsibility or liability for the use of any of these products, conveys no license or title under any patent, copyright, or mask work right to these products, and makes no representations or warranties that these products are free from patent, copyright, or mask work right infringement, unless otherwise specified.

## Contact information

For additional information please visit  
<http://www.semiconductors.philips.com>. Fax: +31 40 27 24825

© Koninklijke Philips Electronics N.V. 2003  
 All rights reserved. Printed in U.S.A.

Date of release: 10-03

For sales offices addresses send e-mail to:  
[sales.addresses@www.semiconductors.philips.com](mailto:sales.addresses@www.semiconductors.philips.com)

Document order number:

9397 750 12191

*Let's make things better.*